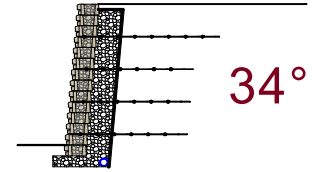


# PRELIMINARY WALL HEIGHT GUIDES



**CHART FOR MIRAFI MIRAGRID**

**Dense Well Graded Sand, Sand and Gravel - Internal Angle of Friction ( $\phi$ ) = 34°**  
**Load Condition A - No Back Slope, No Surcharge**  
**Geogrid Walls - Redi-Scapes 115 Series Blocks**



Wall Height	Bury Depth	Leveling Pad	Geogrid Vertical Placement (VP), Grid Type (GT), and Lengths (L) (Dimensions Measured in Feet from Face of Block)										Est. Geogrid Qty. (Syd/Lf of Wall)			
			VP	GRID	L									3XT	5XT	
1' 0"	6"	6"	VP	None											0.00	0.00
2' 0"	6"	6"	VP	None											0.00	0.00
3' 0"	6"	6"	VP	1.5											0.44	0.00
4' 0"	6"	6"	VP	1	2.5										0.89	0.00
5' 0"	6"	6"	VP	0.5	2	3.5									1.33	0.00
6' 0"	6"	6"	VP	1.5	3	4.5									1.44	0.00
7' 0"	6"	6"	VP	1	2.5	4	5.5								2.33	0.00
8' 0"	6"	1' 0"	VP	0.5	2	3.5	5	6.5							2.89	0.00
9' 0"	6"	1' 0"	VP	1.5	3	4.5	6	7.5							3.44	0.00
10' 0"	6"	1' 0"	VP	1	2.5	4	5.5	7	8.5						4.11	0.00
11' 0"	1' 0"	1' 0"	VP	0.5	2	3.5	5	6.5	8	9.5					5.56	0.00
12' 0"	1' 0"	1' 0"	VP	1.5	3	4.5	6	7.5	9	10.5					6.33	0.00

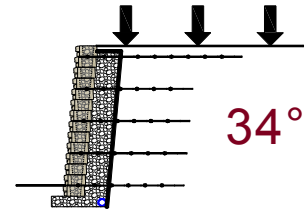
The above chart was prepared by Redi-Scapes™ for estimating and conceptual design purposes only. All information is believed to be true and accurate, however, Redi-Scapes™ assumes no responsibility for the use of these design charts for actual construction. Determination of the suitability of each chart is the sole responsibility of the user. **Final designs for construction purposes must be performed by a registered Professional Engineer, using the actual conditions of the proposed site. Heights greater than 12 feet are achievable.**

**Other Notes:**

- Unit weight of 28°, 30°, 34° and 40° soils is assumed to be 120pcf.
- Minimum factors of safety are 1.5 for sliding, 2.0 for overturning and 2.0 for bearing capacity.
- Designs are in general accordance with NCMA's Design Manual for Segmental Retaining Walls (3rd ed.).
- Global stability has not been addressed in these charts.
- The wall design shall address both internal and external drainage and shall be evaluated by the Professional Engineer who is responsible for the final wall design.
- Backfill material to be compacted to 95% standard proctor.
- All Redi-Scapes™ Wall System Specifications are to be followed.

**CHART FOR MIRAFI MIRAGRID**

**Dense Well Graded Sand, Sand and Gravel - Internal Angle of Friction ( $\phi$ ) = 34°**  
**Load Condition B - No Back Slope, 250psf Live Load Surcharge**  
**Geogrid Walls - Redi-Scapes 115 Series Blocks**



Wall Height	Bury Depth	Leveling Pad	Geogrid Vertical Placement (VP), Grid Type (GT), and Lengths (L) (Dimensions Measured in Feet from Face of Block)										Est. Geogrid Qty. (Syd/Lf of Wall)																		
			VP	GRID	L									3XT	5XT																
1' 6"	6"	6"	VP	GRID	L	1	3XT	4									0.44	0.00													
2' 0"	6"	6"	VP	GRID	L	0.5	3XT	4	1.5	3XT	4						0.89	0.00													
3' 0"	6"	6"	VP	GRID	L	1	3XT	4	2.5	3XT	5						1.00	0.00													
4' 0"	6"	6"	VP	GRID	L	1	3XT	4	2.5	3XT	4	3.5	3XT	5			1.44	0.00													
5' 0"	6"	6"	VP	GRID	L	1.5	3XT	4	3	3XT	4	4.5	3XT	6			1.56	0.00													
6' 0"	6"	6"	VP	GRID	L	1	3XT	4	2.5	3XT	4	4	3XT	5	5.5	3XT	6	2.11	0.00												
7' 0"	6"	6"	VP	GRID	L	0.5	3XT	5	2	3XT	5	3.5	3XT	5	5	3XT	7	3.00	0.00												
8' 0"	6"	1' 0"	VP	GRID	L	1.5	3XT	5	3	3XT	5	4.5	3XT	6	6	3XT	8	3.22	0.00												
9' 0"	6"	1' 0"	VP	GRID	L	1	3XT	6	2.5	3XT	6	4	3XT	6	5.5	3XT	7	8.5	3XT	8	4.33	0.00									
10' 0"	6"	1' 0"	VP	GRID	L	0.5	3XT	7	2	3XT	7	3.5	3XT	7	5	3XT	7	6.5	3XT	7	8	3XT	9	9.5	3XT	9	5.67	0.00			
11' 0"	1' 0"	1' 0"	VP	GRID	L	1.5	3XT	7	3	3XT	7	4.5	3XT	7	6	3XT	7	7.5	3XT	8	9	3XT	9	10.5	3XT	9	5.78	0.00			
12' 0"	1' 0"	1' 0"	VP	GRID	L	1	3XT	8	2.5	3XT	8	4	3XT	8	5.5	3XT	8	7	3XT	8	8.5	3XT	8	10	3XT	10	11.5	3XT	10	7.33	0.00

The above chart was prepared by Redi-Scapes™ for estimating and conceptual design purposes only. All information is believed to be true and accurate, however, Redi-Scapes™ assumes no responsibility for the use of these design charts for actual construction. Determination of the suitability of each chart is the sole responsibility of the user. Final designs for construction purposes must be performed by a registered Professional Engineer, using the actual conditions of the proposed site. Heights greater than 12 feet are achievable.

Other Notes:

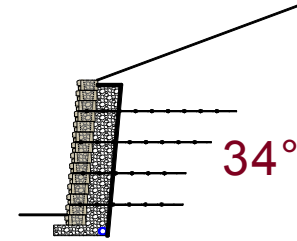
- Unit weight of 28°, 30°, 34° and 40° soils is assumed to be 120pcf.
- Minimum factors of safety are 1.5 for sliding, 2.0 for overturning and 2.0 for bearing capacity.
- Designs are in general accordance with NCMA's Design Manual for Segmental Retaining Walls (3rd ed.).
- Global stability has not been addressed in these charts.
- The wall design shall address both internal and external drainage and shall be evaluated by the Professional Engineer who is responsible for the final wall design.
- Backfill material to be compacted to 95% standard proctor.
- All Redi-Scapes™ Wall System Specifications are to be followed.

**CHART FOR MIRAfi MIRAGRID**

**Dense Well Graded Sand, Sand and Gravel - Internal Angle of Friction ( $\phi$ ) = 34°**

**Load Condition C - 2.5:1 Back Slope, No Surcharge**

**Geogrid Walls - Redi-Scapes 115 Series Blocks**



Wall Height	Bury Depth	Leveling Pad	Geogrid Vertical Placement (VP), Grid Type (GT), and Lengths (L) (Dimensions Measured in Feet from Face of Block)										Est. Geogrid Qty. (Syd/Lf of Wall)			
			VP	GRID	L									3XT	5XT	
1' 0"	6"	6"	VP	None											0.00	0.00
2' 0"	6"	6"	VP	None											0.00	0.00
3' 0"	6"	6"	VP	1.5											0.44	0.00
4' 0"	6"	6"	VP	1	2.5										0.89	0.00
5' 0"	6"	6"	VP	0.5	2	3.5									1.44	0.00
6' 0"	6"	6"	VP	1.5	3	4.5									1.67	0.00
7' 0"	6"	6"	VP	1	2.5	4	5.5								2.44	0.00
8' 0"	6"	1' 0"	VP	0.5	2	3.5	5	6.5							3.11	0.00
9' 0"	6"	1' 0"	VP	1.5	3	4.5	6	7.5							3.67	0.00
10' 0"	6"	1' 0"	VP	1	2.5	4	5.5	7	8.5						4.56	0.00
11' 0"	1' 0"	1' 0"	VP	0.5	2	3.5	5	6.5	8	9.5					5.78	0.00
12' 0"	1' 0"	1' 0"	VP	0.5	1.5	3	4.5	6	7.5	9	10.5				7.44	0.00

The above chart was prepared by Redi-Scapes™ for estimating and conceptual design purposes only. All information is believed to be true and accurate, however, Redi-Scapes™ assumes no responsibility for the use of these design charts for actual construction. Determination of the suitability of each chart is the sole responsibility of the user. **Final designs for construction purposes must be performed by a registered Professional Engineer, using the actual conditions of the proposed site. Heights greater than 12 feet are achievable.**

Other Notes:

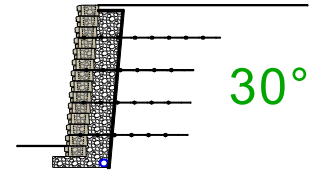
- Unit weight of 28°, 30°, 34° and 40° soils is assumed to be 120pcf.
- Minimum factors of safety are 1.5 for sliding, 2.0 for overturning and 2.0 for bearing capacity.
- Designs are in general accordance with NCMA's [Design Manual for Segmental Retaining Walls](#) (3rd ed.).
- Global stability has not been addressed in these charts.
- The wall design shall address both internal and external drainage and shall be evaluated by the Professional Engineer who is responsible for the final wall design.
- Backfill material to be compacted to 95% standard proctor.
- All Redi-Scapes™ Wall System Specifications are to be followed.

**CHART FOR MIRAFI MIRAGRID**

**Silty Sand, Fine to Medium Sand - Internal Angle of Friction ( $\phi$ ) = 30°**

**Load Condition A - No Back Slope, No Surcharge**

**Geogrid Walls - Redi-Scapes 115 Series Blocks**



Wall Height	Bury Depth	Leveling Pad	Geogrid Vertical Placement (VP), Grid Type (GT), and Lengths (L) (Dimensions Measured in Feet from Face of Block)										Est. Geogrid Qty. (Syd/Lf of Wall)			
			VP	GRID	L									3XT	5XT	
1' 0"	6"	6"	VP	None											0.00	0.00
2' 0"	6"	6"	VP	None											0.00	0.00
3' 0"	6"	6"	VP	1.5											0.44	0.00
4' 0"	6"	6"	VP	1	2.5										0.89	0.00
5' 0"	6"	6"	VP	0.5	2	3.5									1.44	0.00
6' 0"	6"	6"	VP	1.5	3	4.5									1.44	0.00
7' 0"	6"	6"	VP	1	2.5	4	5.5								2.33	0.00
8' 0"	6"	1' 0"	VP	0.5	2	3.5	5	6.5							3.11	0.00
9' 0"	6"	1' 0"	VP	1.5	3	4.5	6	7.5							3.44	0.00
10' 0"	6"	1' 0"	VP	1	2.5	4	5.5	7	8.5						4.78	0.00
11' 0"	1' 0"	1' 0"	VP	0.5	2	3.5	5	6.5	8	9.5					5.78	0.00
12' 0"	1' 0"	1' 0"	VP	1.5	3	4.5	6	7.5	9	10.5					6.33	0.00

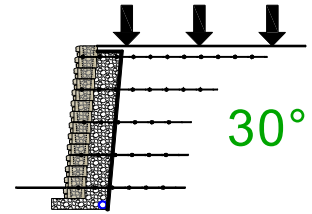
The above chart was prepared by Redi-Scapes™ for estimating and conceptual design purposes only. All information is believed to be true and accurate, however, Redi-Scapes™ assumes no responsibility for the use of these design charts for actual construction. Determination of the suitability of each chart is the sole responsibility of the user. **Final designs for construction purposes must be performed by a registered Professional Engineer, using the actual conditions of the proposed site. Heights greater than 12 feet are achievable.**

**Other Notes:**

- Unit weight of 28°, 30°, 34° and 40° soils is assumed to be 120pcf.
- Minimum factors of safety are 1.5 for sliding, 2.0 for overturning and 2.0 for bearing capacity.
- Designs are in general accordance with NCMA's Design Manual for Segmental Retaining Walls (3rd ed.).
- Global stability has not been addressed in these charts.
- The wall design shall address both internal and external drainage and shall be evaluated by the Professional Engineer who is responsible for the final wall design.
- Backfill material to be compacted to 95% standard proctor.
- All Redi-Scapes™ Wall System Specifications are to be followed.

**CHART FOR MIRAFI MIRAGRID**

**Silty Sand, Fine to Medium Sand - Internal Angle of Friction ( $\phi$ ) = 30°**  
**Load Condition B - No Back Slope, 250psf Live Load Surcharge**  
**Geogrid Walls - Redi-Scapes 115 Series Blocks**



Wall Height	Bury Depth	Leveling Pad	Geogrid Vertical Placement (VP), Grid Type (GT), and Lengths (L) (Dimensions Measured in Feet from Face of Block)										Est. Geogrid Qty. (Syd/Lf of Wall)			
			VP	0.5	1									3XT	5XT	
1' 6"	6"	6"	VP	0.5	1										0.89	0.00
			GRID	3XT	3XT											
			L	4	4											
2' 0"	6"	6"	VP	1	1.5									0.89	0.00	
			GRID	3XT	3XT											
			L	4	4											
3' 0"	6"	6"	VP	1	2.5									1.11	0.00	
			GRID	3XT	3XT											
			L	4	6											
4' 0"	6"	6"	VP	1	2.5	3.5								1.56	0.00	
			GRID	3XT	3XT	3XT										
			L	4	4	6										
5' 0"	6"	6"	VP	1.5	3	4.5								1.78	0.00	
			GRID	3XT	3XT	3XT										
			L	4	5	7										
6' 0"	6"	6"	VP	1	2.5	4	5.5							2.33	0.00	
			GRID	3XT	3XT	3XT	3XT									
			L	4	4	5	8									
7' 0"	6"	6"	VP	0.5	2	3.5	5	6.5						3.22	0.00	
			GRID	3XT	3XT	3XT	3XT	3XT								
			L	5	5	5	6	8								
8' 0"	6"	1' 0"	VP	1.5	3	4.5	6	7.5						3.44	0.00	
			GRID	3XT	3XT	3XT	3XT	3XT								
			L	5	5	5	7	9								
9' 0"	6"	1' 0"	VP	1	2.5	4	5.5	7	8.5					4.67	0.00	
			GRID	3XT	3XT	3XT	3XT	3XT	3XT							
			L	6	6	6	6	8	10							
10' 0"	6"	1' 0"	VP	0.5	2	3.5	5	6.5	8	9.5				5.89	0.00	
			GRID	3XT	3XT	3XT	3XT	3XT	3XT	3XT						
			L	7	7	7	7	7	8	10						
11' 0"	1' 0"	1' 0"	VP	1.5	3	4.5	6	7.5	9	10.5				6.11	0.00	
			GRID	3XT	3XT	3XT	3XT	3XT	3XT	3XT						
			L	7	7	7	7	7	9	11						
12' 0"	1' 0"	1' 0"	VP	1	2.5	4	5.5	7	8.5	10	11.5			7.67	0.00	
			GRID	3XT	3XT	3XT	3XT	3XT	3XT	3XT	3XT					
			L	8	8	8	8	8	8	9	12					

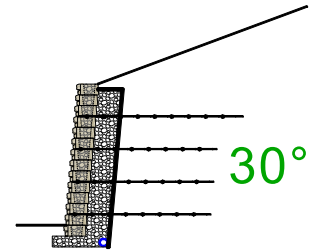
The above chart was prepared by Redi-Scapes™ for estimating and conceptual design purposes only. All information is believed to be true and accurate, however, Redi-Scapes™ assumes no responsibility for the use of these design charts for actual construction. Determination of the suitability of each chart is the sole responsibility of the user. **Final designs for construction purposes must be performed by a registered Professional Engineer, using the actual conditions of the proposed site. Heights greater than 12 feet are achievable.**

Other Notes:

- Unit weight of 28°, 30°, 34° and 40° soils is assumed to be 120pcf.
- Minimum factors of safety are 1.5 for sliding, 2.0 for overturning and 2.0 for bearing capacity.
- Designs are in general accordance with NCMA's [Design Manual for Segmental Retaining Walls](#) (3rd ed.).
- Global stability has not been addressed in these charts.
- The wall design shall address both internal and external drainage and shall be evaluated by the Professional Engineer who is responsible for the final wall design.
- Backfill material to be compacted to 95% standard proctor.
- All Redi-Scapes™ Wall System Specifications are to be followed.

**CHART FOR MIRAFI MIRAGRID**

**Silty Sand, Fine to Medium Sand - Internal Angle of Friction ( $\phi$ ) = 30°**  
**Load Condition C - 2.5:1 Back Slope, No Surcharge**  
**Geogrid Walls - Redi-Scapes 115 Series Blocks**



Wall Height	Bury Depth	Leveling Pad	Geogrid Vertical Placement (VP), Grid Type (GT), and Lengths (L) (Dimensions Measured in Feet from Face of Block)										Est. Geogrid Qty. (Syd/Lf of Wall)				
			VP	GRID	L									3XT	5XT		
1' 0"	6"	6"	VP	None												0.00	0.00
2' 0"	6"	6"	VP	1												0.44	0.00
3' 0"	6"	6"	VP	1.5												0.44	0.00
4' 0"	6"	6"	VP	1	2.5											1.00	0.00
5' 0"	6"	6"	VP	1	2.5	4										1.78	0.00
6' 0"	6"	6"	VP	1.5	3	4.5										1.78	0.00
7' 0"	6"	6"	VP	1	2.5	4	5.5									2.78	0.00
8' 0"	6"	1' 0"	VP	1	2.5	4	5.5	7								3.78	0.00
9' 0"	6"	1' 0"	VP	1.5	3	4.5	6	7.5								4.22	0.00
10' 0"	6"	1' 0"	VP	1	2.5	4	5.5	7	8.5							5.67	0.00
11' 0"	1' 0"	1' 0"	VP	1	2.5	4	5.5	7	8.5	10						7.33	0.00
12' 0"	1' 0"	1' 0"	VP	0.5	1.5	3	4.5	6	7.5	9	10.5					9.11	0.00

The above chart was prepared by Redi-Scapes™ for estimating and conceptual design purposes only. All information is believed to be true and accurate, however, Redi-Scapes™ assumes no responsibility for the use of these design charts for actual construction. Determination of the suitability of each chart is the sole responsibility of the user. Final designs for construction purposes must be performed by a registered Professional Engineer, using the actual conditions of the proposed site. Heights greater than 12 feet are achievable.

Other Notes:

- Unit weight of 28°, 30°, 34° and 40° soils is assumed to be 120pcf.
- Minimum factors of safety are 1.5 for sliding, 2.0 for overturning and 2.0 for bearing capacity.
- Designs are in general accordance with NCMA's Design Manual for Segmental Retaining Walls (3rd ed.).
- Global stability has not been addressed in these charts.
- The wall design shall address both internal and external drainage and shall be evaluated by the Professional Engineer who is responsible for the final wall design.
- Backfill material to be compacted to 95% standard proctor.
- All Redi-Scapes™ Wall System Specifications are to be followed.

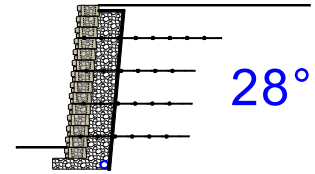


**CHART FOR MIRAFI MIRAGRID**

**Silty Sand, Clayey Sand - Internal Angle of Friction ( $\phi$ ) = 28°**

**Load Condition A - No Back Slope, No Surcharge**

**Geogrid Walls - Redi-Scapes 115 Series Blocks**



Wall Height	Bury Depth	Leveling Pad	Geogrid Vertical Placement (VP), Grid Type (GT), and Lengths (L) (Dimensions Measured in Feet from Face of Block)										Est. Geogrid Qty. (Syd/Lf of Wall)				
			VP	GRID	L									3XT	5XT		
1' 0"	6"	6"	VP	None												0.00	0.00
2' 0"	6"	6"	VP	None												0.00	0.00
3' 0"	6"	6"	VP	1.5												0.44	0.00
4' 0"	6"	6"	VP	1	2.5											0.89	0.00
5' 0"	6"	6"	VP	0.5	2	3.5										1.44	0.00
6' 0"	6"	6"	VP	1.5	3	4.5										1.44	0.00
7' 0"	6"	6"	VP	1	2.5	4	5.5									2.33	0.00
8' 0"	6"	1' 0"	VP	0.5	2	3.5	5	6.5								3.11	0.00
9' 0"	6"	1' 0"	VP	1.5	3	4.5	6	7.5								3.67	0.00
10' 0"	6"	1' 0"	VP	1	2.5	4	5.5	7	8.5							4.78	0.00
11' 0"	1' 0"	1' 0"	VP	0.5	2	3.5	5	6.5	8	9.5						5.78	0.00
12' 0"	1' 0"	1' 0"	VP	1.5	3	4.5	6	7.5	9	10.5						6.56	0.00

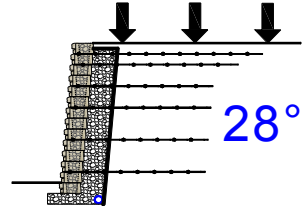
The above chart was prepared by Redi-Scapes™ for estimating and conceptual design purposes only. All information is believed to be true and accurate, however, Redi-Scapes™ assumes no responsibility for the use of these design charts for actual construction. Determination of the suitability of each chart is the sole responsibility of the user. **Final designs for construction purposes must be performed by a registered Professional Engineer, using the actual conditions of the proposed site. Heights greater than 12 feet are achievable.**

**Other Notes:**

- Unit weight of 28°, 30°, 34° and 40° soils is assumed to be 120pcf.
- Minimum factors of safety are 1.5 for sliding, 2.0 for overturning and 2.0 for bearing capacity.
- Designs are in general accordance with NCMA's Design Manual for Segmental Retaining Walls (3rd ed.).
- Global stability has not been addressed in these charts.
- The wall design shall address both internal and external drainage and shall be evaluated by the Professional Engineer who is responsible for the final wall design.
- Backfill material to be compacted to 95% standard proctor.
- All Redi-Scapes™ Wall System Specifications are to be followed.

**CHART FOR MIRAFI MIRAGRID**

**Silty Sand, Clayey Sand - Internal Angle of Friction ( $\phi$ ) = 28°**  
**Load Condition B - No Back Slope, 250psf Live Load Surcharge**  
**Geogrid Walls - Redi-Scapes 115 Series Blocks**



Wall Height	Bury Depth	Leveling Pad	Geogrid Vertical Placement (VP), Grid Type (GT), and Lengths (L) (Dimensions Measured in Feet from Face of Block)										Est. Geogrid Qty. (Syd/Lf of Wall)			
			VP	GRID	L									3XT	5XT	
1' 6"	6"	6"	0.5	1											0.89	0.00
2' 0"	6"	6"	0.5	1.5											1.00	0.00
3' 0"	6"	6"	1	2	2.5										1.44	0.00
4' 0"	6"	6"	1	2.5	3.5										1.78	0.00
5' 0"	6"	6"	1.5	3	4.5										2.00	0.00
6' 0"	6"	6"	1.5	3	4.5	5.5									2.67	0.00
7' 0"	6"	6"	1	2.5	4	5.5	6.5								3.78	0.00
8' 0"	6"	1' 0"	1.5	3	4.5	6	7.5								4.22	0.00
9' 0"	1' 0"	1' 0"	1	2.5	4	5.5	7	8.5							5.22	0.00
10' 0"	1' 0"	1' 0"	1	2.5	4	5.5	7	8.5	9.5						6.22	0.00
11' 0"	1' 0"	1' 0"	1.5	3	4.5	6	7.5	9	10.5						6.78	0.00
12' 0"	1' 0"	1' 0"	1	2.5	4	5.5	7	8.5	10	11.5					8.56	0.00

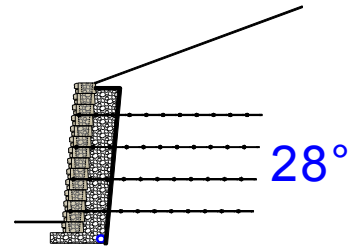
The above chart was prepared by Redi-Scapes™ for estimating and conceptual design purposes only. All information is believed to be true and accurate, however, Redi-Scapes™ assumes no responsibility for the use of these design charts for actual construction. Determination of the suitability of each chart is the sole responsibility of the user. Final designs for construction purposes must be performed by a registered Professional Engineer, using the actual conditions of the proposed site. Heights greater than 12 feet are achievable.

Other Notes:

- Unit weight of 28°, 30°, 34° and 40° soils is assumed to be 120pcf.
- Minimum factors of safety are 1.5 for sliding, 2.0 for overturning and 2.0 for bearing capacity.
- Designs are in general accordance with NCMA's [Design Manual for Segmental Retaining Walls](#) (3rd ed.).
- Global stability has not been addressed in these charts.
- The wall design shall address both internal and external drainage and shall be evaluated by the Professional Engineer who is responsible for the final wall design.
- Backfill material to be compacted to 95% standard proctor.
- All Redi-Scapes™ Wall System Specifications are to be followed.

**CHART FOR MIRAfi MIRAGRiD**

**Silty Sand, Clayey Sand - Internal Angle of Friction ( $\phi$ ) = 28°**  
**Load Condition C - 2.5:1 Back Slope, No Surcharge**  
**Geogrid Walls - Redi-Scapes 115 Series Blocks**



Wall Height	Bury Depth	Leveling Pad	Geogrid Vertical Placement (VP), Grid Type (GT), and Lengths (L) (Dimensions Measured in Feet from Face of Block)										Est. Geogrid Qty. (Syd/Lf of Wall)				
			VP	GT	L									3XT	5XT		
1' 0"	6"	6"	VP	None												0.00	0.00
2' 0"	6"	6"	VP	1												0.44	0.00
3' 0"	6"	6"	VP	1.5												0.44	0.00
4' 0"	6"	6"	VP	1	2.5											1.11	0.00
5' 0"	6"	6"	VP	1	2	3.5										2.00	0.00
6' 0"	6"	6"	VP	1.5	3	4.5										2.33	0.00
7' 0"	6"	6"	VP	1	2.5	4	5.5									3.56	0.00
8' 0"	6"	1' 0"	VP	1	2	3.5	5	6.5								5.00	0.00
9' 0"	1' 0"	1' 0"	VP	1.5	3	4.5	6	7.5								5.56	0.00
10' 0"	1' 0"	1' 0"	VP	1	2.5	4	5.5	7	8.5							7.33	0.00
11' 0"	1' 0"	1' 0"	VP	1	2	3.5	5	6.5	8	9.5						10.11	0.00
12' 0"	1' 0"	1' 0"	VP	1	2	3	4.5	6	7.5	9	10.5					13.33	0.00

The above chart was prepared by Redi-Scapes™ for estimating and conceptual design purposes only. All information is believed to be true and accurate, however, Redi-Scapes™ assumes no responsibility for the use of these design charts for actual construction. Determination of the suitability of each chart is the sole responsibility of the user. **Final designs for construction purposes must be performed by a registered Professional Engineer, using the actual conditions of the proposed site. Heights greater than 12 feet are achievable.**

**Other Notes:**

- Unit weight of 28°, 30°, 34° and 40° soils is assumed to be 120pcf.
- Minimum factors of safety are 1.5 for sliding, 2.0 for overturning and 2.0 for bearing capacity.
- Designs are in general accordance with NCMA's Design Manual for Segmental Retaining Walls (3rd ed.).
- Global stability has not been addressed in these charts.
- The wall design shall address both internal and external drainage and shall be evaluated by the Professional Engineer who is responsible for the final wall design.
- Backfill material to be compacted to 95% standard proctor.
- All Redi-Scapes™ Wall System Specifications are to be followed.